

Forney

No parts available on any model - no other literature available

AIR COMPRESSOR

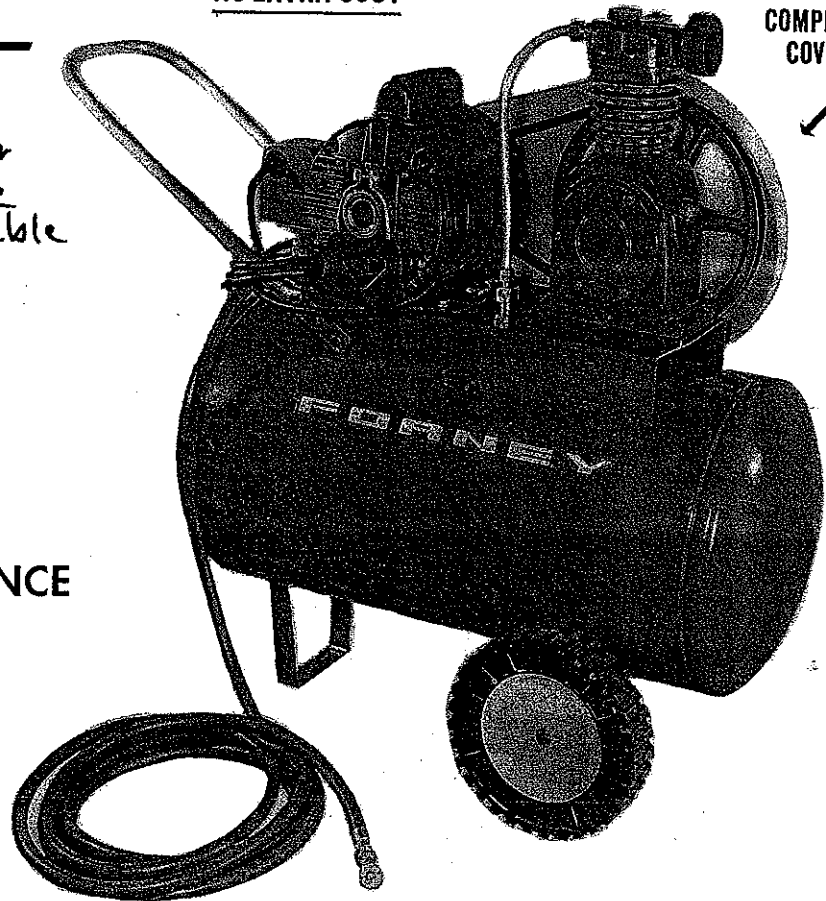
COMPLETELY PORTABLE,
HIGHLY EFFICIENT
A VERY PRACTICAL CONVENIENCE

FEATURES —

- ★ Special strength 12 gauge all welded 12-gallon tank which has been designed and tested to 300 PSI.
- ★ Full 8-1/4" x 1-3/4" puncture-proof wheels assure easy movement in all directions, even in sand and gravel.
- ★ Adjustable safety relief valve. Range of 25 lbs. to 200 lbs. Has 2" Ashcroft pressure gauge.
- ★ Rugged and dependable large capacity compressor, time-tested and proven. Aluminum cylinder head, extra heavy over-size bearings supported at both ends. Cylinders precision bored and honed, automotive type three ring pistons. Check valve at tank.
- ★ Complete with 18' heavy double braided hose and detachable air chuck.
- ★ Also equipped with shut-off valve.

ADDED
SAFETY FEATURES
NO EXTRA COST

SAFETY
GUARD
ALL MOVING PARTS
COMPLETELY
COVERED



With a FORNEY AIR COMPRESSOR you can have plenty of pressure and proper flow of air for practically any use --

Tire inflation, lubrication, spray painting buildings, boats, trucks, furniture, also interior painting); removing wall paper (with hot water spray); inflating rubber toys, footballs, swimming pools, etc.; operate air-impact tools.

ELECTRIC POWERED - Equipped with heavy duty motor, 115/230 volt, single phase, 1725 RPM, 60 Cycle, 50° temperature rise, continuous duty; 8' U. L. approved supply cord. Also equipped with polarized connector and pigtail ground adaptor and adjustable automatic pressure switch.

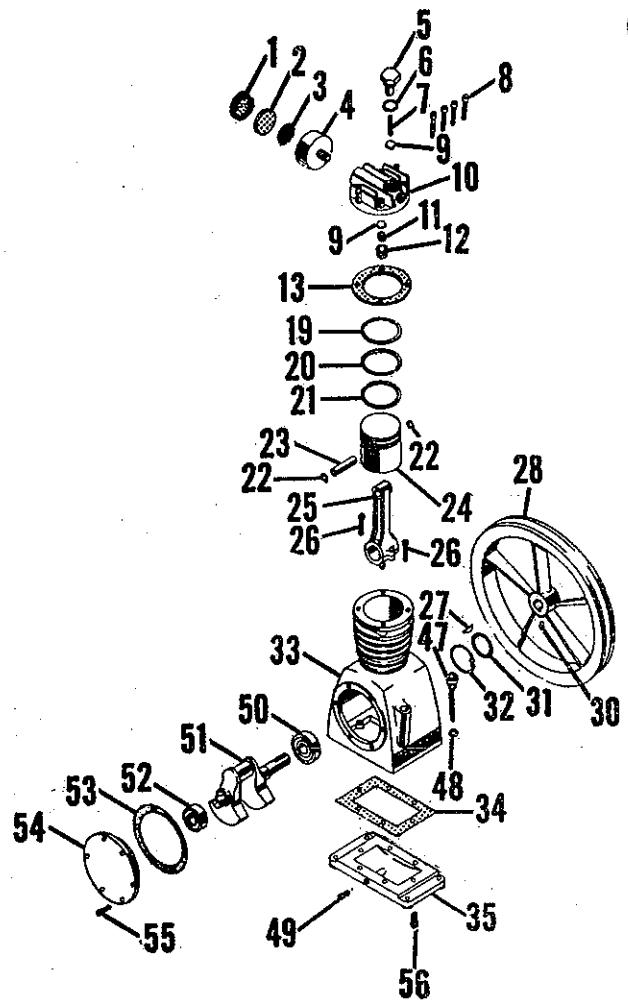
SPECIFICATIONS

MODEL ACV - 12E-32A (1/2 HP) or - 42A (3/4 HP)

Motor HP	Pulley Size	Comp. RPM	Cu. Ft. Per Min.	Pressure
1/2	3"	575	3.0	40-80 PSI
3/4	3-1/2"	750	3.8	40-80 PSI

PARTS LIST FOR FORNEY MODEL ACV 12E-32A and -42A COMPRESSORS

Part No.	Description
1-614037	Air Intake Cap
2-604006	Air Intake Felt
3-616014	Air Intake Screen
4-610087	Air Intake Body
5-610016	Exhaust Valve Head
6-633022	Exhaust Valve Head Gasket
7-627006	Exhaust Valve Spring
8-625017	Head Screw
9-626017	Valve
10-610044	Compressor Head
11-627005	Intake Valve Spring
12-603000	Intake Valve Cage
13-633157	Head Gasket
19-623062	Compression Ring
20-623064	Scraper Ring
21-623063	Oil Ring
22-617004	Piston Pin Clips
23-626028	Wrist Pin
24-637010	Piston
25-607001	Connecting Rod
26-625003	Connecting Rod Screw
27-626115	Woodruff Key
28-647023	Flywheel (9" O.D.)
30-625013	Set Screw
31-633156	Oil Seal
32-623041	Retaining Ring Internal
33-610144	Compressor Housing
34-633027	Bottom Plate Gasket
35-621006	Bottom Plate
47-633070	Dip Stick Assembly
48-623025	O-Ring
49-633025	Pipe Plug
50-646006	Ball Bearing
51-645000	Crankshaft
52-646501	Ball Bearing
53-633002	Cap Gasket
54-614025	Bearing Cap
55-625020	Bearing Cap Screw
56-625054	Cap Screw



OPERATING INSTRUCTIONS

Before plugging compressor motor into the electric circuit be sure the lubrication requirements have been met. Then plug in compressor and allow to run for about ten minutes to loosen and warm it up and as a check to see that it is operating properly. Low voltage conditions are prevalent in some localities. In addition, unusually heavy line loads or small gauge extension cords will reduce the line voltage below the normal 115 or 230 volts. For this reason it is well to operate compressor as mentioned above until it is thoroughly warmed up before using gun or other appliance.

LUBRICATION — Add oil whenever oil goes below knurl mark. Check oil every 8 hours of operating time. Change oil every 50 hours of operating time. **WARNING - DO NOT FILL CRANKCASE WHILE COMPRESSOR IS OPERATING.**

WIRE SIZE FOR EXTENSION CORDS — If it is necessary to use an extension cord be sure that wire

is NOT LESS THAN No. 14 gauge for a 25-foot extension. NOT LESS THAN No. 12 gauge for a 50-foot extension, and NOT LESS THAN No. 10 gauge for 100-foot extension. THIS IS HIGHLY IMPORTANT. Avoid excessive voltage drop by keeping circuits as short as possible.

CLEAN COMPRESSOR AIR FILTER REGULARLY— The felt air filter on the cylinder heads should be removed and cleaned at least once every four operating hours. This, however, is largely dependent upon operating conditions. More frequent cleaning may be necessary if the air is heavily contaminated.

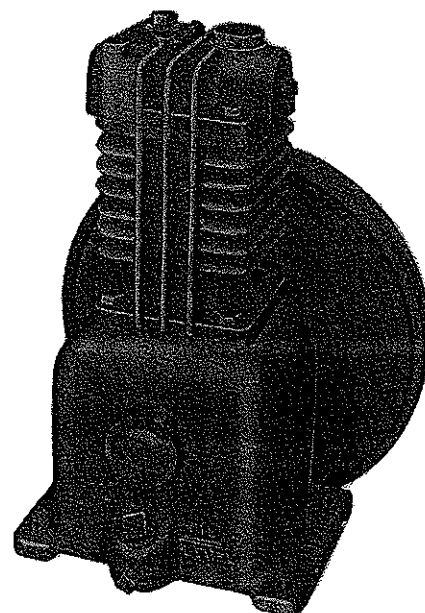
SEE THAT HOSE CONNECTIONS ARE TIGHT — The hose is fitted with proper connections for attaching either to compressor or to the gun. These connections should be tight at all times to avoid air leakage. Use wrench for tightening - do not depend on fingers.

Keep Pulleys and Belt tight at all times to avoid slippage.

**FORNEY MFG. CO., FORT COLLINS, COLORADO, U.S.A.
FORNEY ARC WELDERS LTD., ESTEVAN, SASK., CANADA**

Operating Instructions and Parts List For Model 28

Size 2x1³/₄ Air Compressor



COMPRESSOR

Should be installed in a clean accessible location. It may be run in either direction of rotation. Piping between compressor and air receiver should be no smaller than 1/4" pipe or 3/8" O.D. tubing. If it is desired to hold pressure in the air receiver a 1/4" check valve should be installed in this line. Do not under any circumstance install any kind of stop valve between compressor and air receiver.

LUBRICATION

Before operating compressor remove plug No. 1111 and fill with a good grade of automobile cylinder oil until opening overflows. SAE20 oil should be used for normal conditions; if compressor is to operate in a location where the temperature is 32 degrees or lower SAE10 oil should be used. Never allow the oil level to fall more than 1/4" below the full mark and change oil whenever it becomes dirty.

AIR RECEIVER

Do not use any tank except one made especially for compressed air and factory tested and approved for the desired operating pressure. The air receiver must be equipped with a reliable safety valve set at a pressure not more than 10% higher than the working pressure of the air receiver. Do not tamper with or change the setting of the safety valve. Drain water accumulation from receiver daily.

ELECTRIC MOTOR

Be sure to read and follow the instructions attached to motor. It is advisable to disconnect the current at night or when compressor is not needed.

V-BELT

Should be in perfect alignment and should not be excessively tight nor loose enough to slip.

AIR INTAKE FILTER

The filter felt No. 1120 should be cleaned or replaced periodically. To remove it take out the two cap screws No. 1131 and lift cover No. 1104.

SERVICING

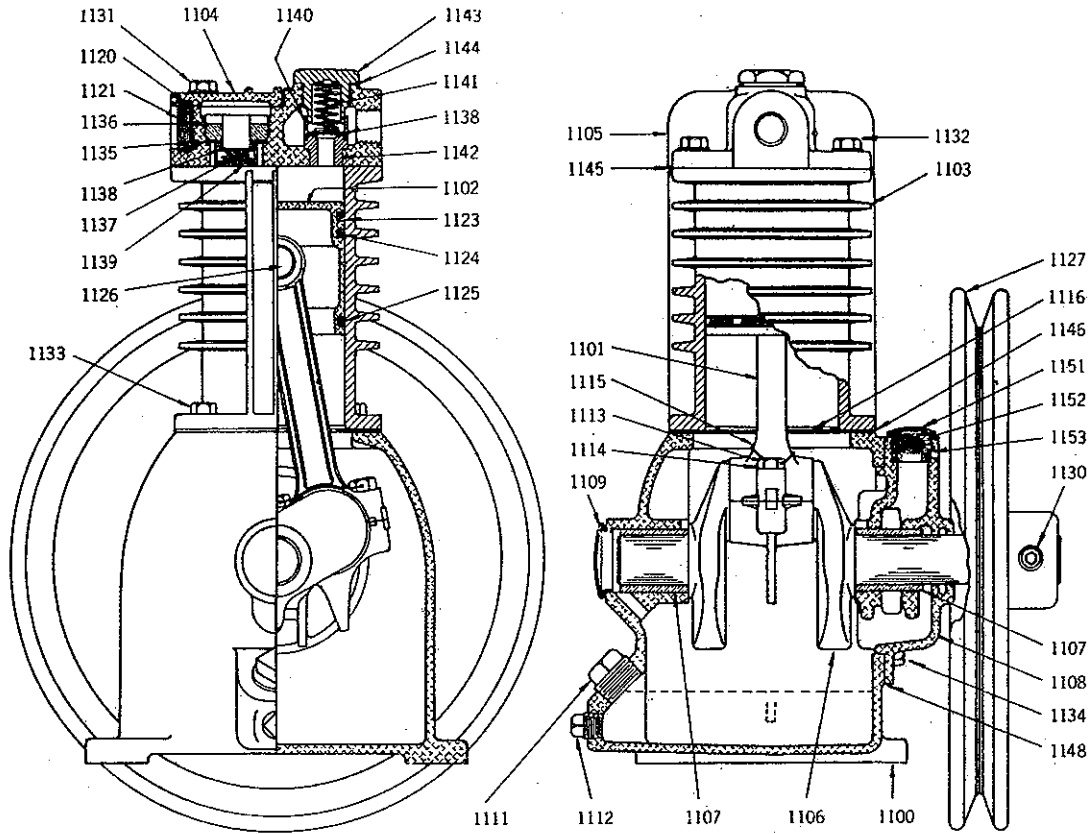
If compressor does not pump as well as when new and it is running at the proper speed and there are no leaks the trouble is probably in the valves. Remove part No. 1104 and No. 1136 and examine the suction valve parts. Reassemble carefully and if there is no improvement remove part No. 1143 and examine the discharge valve parts. Do not attempt to grind valves or seats. In reassembling make sure all parts are clean and in proper place. After long service the piston and rings will of course wear and require replacement.

Your compressor has been carefully built and tested by skilled workmen and if kept clean and properly lubricated will give you wonderful service.

COMPRESSOR RATINGS AND MOTOR PULLEY SIZES

Motor Horse Power	FOR CONTINUOUS OPERATION						FOR INTERMITTENT OPERATION								
	40 LBS. PRESSURE			80 LBS. PRESSURE			40 LBS. PRESSURE			80 LBS. PRESSURE			150 LBS. PRESSURE		
	Comp. RPM	Cu. Ft. Per Min.	Motor Pulley O.D.	Comp. RPM	Cu. Ft. Per Min.	Motor Pulley O.D.	Comp. RPM	Cu. Ft. Per Min.	Motor Pulley O.D.	Comp. RPM	Cu. Ft. Per Min.	Motor Pulley O.D.	Comp. RPM	Cu. Ft. Per Min.	Motor Pulley O.D.
1/4	650	2.07	3 1/2"	450	1.43	2 1/4"	750	2.5	3 5/8"	700	2.3	3 1/2"			
1/3	800	2.55	3 3/4"	620	1.98	3"	900	2.86	4 1/4"	750	2.5	3 5/8"	570	1.8	2 3/4"
1/2	900	2.86	4 1/4"	875	2.80	4"				875	2.80	4"	875	2.80	4"

The maximum pressure for continuous operation is 100 lbs. and for intermittent operation 150 lbs. Pulley sizes shown are for 1750 RPM motors.



PARTS LIST

Part No.	Name of Part	Price	Part No.	Name of Part	Price
1100	Crank case	4.00	1138	Valve (suction or discharge) (2)50
1101	Connecting rod assembly	3.50	1139	Suction bumper50
1102	Piston	3.00	1140	Discharge guide40
1103	Cylinder	4.00	1141	Discharge spring15
1104	Head cover60	1142	Discharge seat35
1105	Head	2.50	1143	Discharge bumper50
1106	Crankshaft	5.00	1144	Discharge bumper gasket10
1107	Journal bushing (2)40	1145	Head gasket20
1108	Bearing plate	2.25	1146	Cylinder gasket (2)10
1109	Bearing plug25	1148	Bearing plate gasket10
1111	Oil fill plug15	1151	Breather plug20
1112	Oil drain plug15	1152	Breather spring15
1113	Connecting rod bolt (2)20	1153	Breather valve15
1114	Connecting rod washer (2)05			
1115	Connecting rod wire05			
1116	Baffle25			
1120	Filter felt15			
1121	Filter screen15			
1123	Plain piston ring40			
1125	Oil control ring60			
1126	Piston pin50			
1127	Pulley, pressed steel type	3.00			
1130	Pulley set screw15			
1131	Long head bolt (2)10			
1132	Short head bolt (2)05			
1133	Cylinder bolt (4)05			
1134	Bearing plate bolt (4)05			
1135	Suction bumper gasket10			
1136	Suction seat50			
1137	Suction spring15			

ASSEMBLIES

Bearing plate	2.75
Cylinder head with gasket and filter	5.25
Piston with pin and rings	4.50
Complete set of gaskets80
Complete set of piston rings	1.40

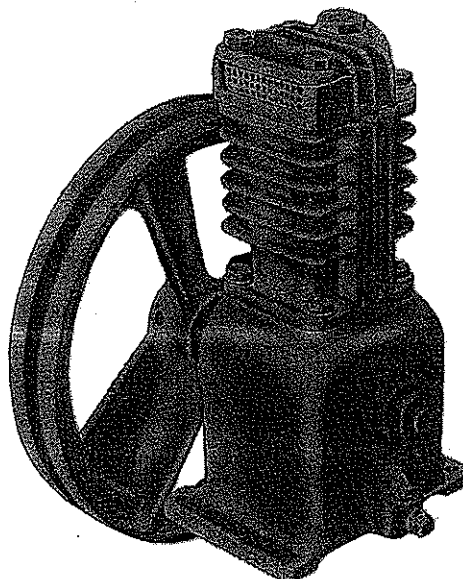
When ordering repairs always give the model number of the compressor, the number of the part, the name of the part and exact quantity wanted.

MINIMUM CHARGE 50c.

ALL PRICES SUBJECT TO CHANGE WITHOUT NOTICE.

Operating Instructions for Model 36

Size 2 $\frac{1}{4}$ x1 $\frac{3}{4}$ Air Compressor



COMPRESSOR

Should be installed in a clean accessible location. Direction of rotation should conform to arrow on Pulley fan blade. Piping between compressor and air receiver should be no smaller than the discharge opening in cylinder head. If it is desired to hold pressure in the air receiver a check valve should be installed in the line. Do not under any circumstance install any kind of stop valve between compressor and air receiver.

AIR INTAKE FILTER

The filter felt No. 1120 should be cleaned or replaced periodically. To remove it take out the two cap screws No. 1174 and lift cover No. 1119.

LUBRICATION

Before operating compressor remove plug No. 1111 and fill with a good grade of automobile cylinder oil until opening overflows. SAE 20 oil should be used for normal conditions; if compressor is to operate in a location where the temperature is 32 degrees or lower SAE 10 oil should be used. Never allow the oil level to fall more than $\frac{1}{4}$ " below the full mark and change oil whenever it becomes dirty.

AIR RECEIVER

Do not use any tank except one made especially for compressed air and factory tested and approved for the desired operating pressure. The air receiver must be equipped with a reliable safety valve set at a pressure not more than 10% higher than the working pressure of the air receiver. Do not tamper with or change the setting of the safety valve. Drain water accumulation from receiver daily.

ELECTRIC MOTOR

Be sure to read and follow the instructions attached to motor. It is advisable to disconnect the current at night or when compressor is not needed.

V-BELT

Should be in perfect alignment and should not be excessively tight nor loose enough to slip.

SERVICING

If compressor does not pump as well as when new and it is running at the proper speed and there are no leaks the trouble is probably in the valves. Remove part No. 1119 and No. 1136 and examine the suction valve parts. Reassemble carefully and if there is no improvement remove part No. 1143 and examine the discharge valve parts. Do not attempt to grind valves or seats. In reassembling make sure all parts are clean and in proper place. After long service the piston and rings will of course wear and require replacement.

Your compressor has been carefully built and tested by skilled workmen and if kept clean and properly lubricated will give you wonderful service.

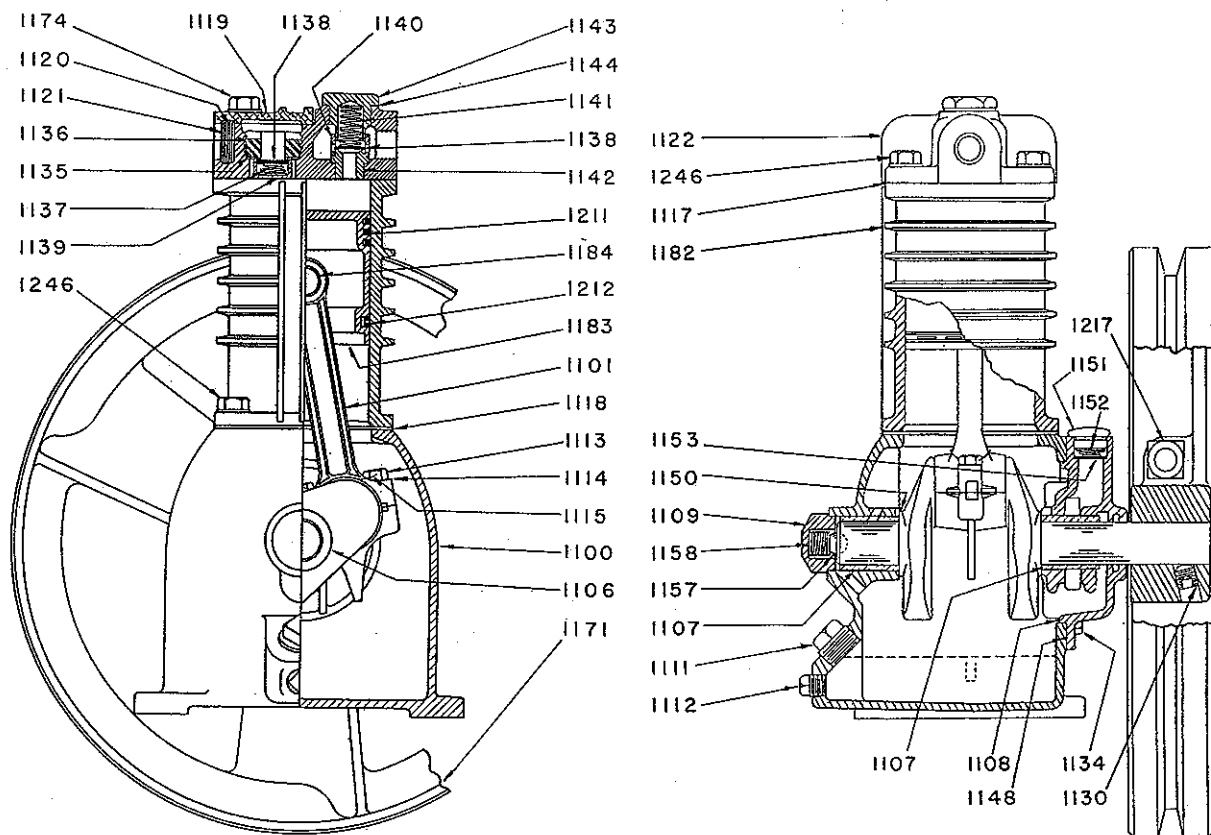
COMPRESSOR SPEEDS AND PISTON DISPLACEMENT

The RPM you can run compressor at various pressures is shown in following table.

Motor Horse Power	40 LBS. PRESS.		60 LBS. PRESS.		80 LBS. PRESS.		100 LBS. PRESS.		150 LBS. PRESS.	
	RPM	Piston Displ.	RPM	Piston Displ.	RPM	Piston Displ.	RPM	Piston Displ.	RPM	Piston Displ.
$\frac{1}{3}$	720	2.9	625	2.5	575	2.3	525	2.1	525	2.1
$\frac{1}{2}$			900	3.6	850	3.4	800	3.2	700	2.8

The above figures are for intermittent service and with good full duty motors. For continuous service it is recommended that the RPM be reduced approximately 10% to lighten motor load. The compressor is good for 100 lbs. pressure for continuous service and 150 lbs pressure for intermittent service.

FORNEY MANUFACTURING CO.
FORT COLLINS, COLO.



PARTS LIST FOR MODEL 36 COMPRESSOR

Part No.	Name of Part	Price	Part No.	Name of Part	Price
1100	Crankcase	5.00	1151	Breather plug	.20
1101	Connecting rod assembly	4.50	1152	Breather spring	.15
1106	Crankshaft	5.00	1153	Breather valve	.15
1107	Journal bushing (2)	.50	1157	Steel ball	.10
1108	Bearing plate	2.50	1158	End play spring	.15
1109	Bearing plug	.30	1170	Pulley 9" O.D.	5.00
1111	Oil fill plug	.20	1171	Pulley 10" O.D.	7.00
1112	Oil drain plug	.20	1174	Long head bolt (2)	.15
1113	Connecting rod bolt (2)	.25	1182	Cylinder	6.00
1114	Connecting rod washer (2)	.05	1183	Piston	4.00
1115	Connecting rod wire	.05	1184	Piston Pin	.80
1117	Head gasket	.20	1211	Compression ring	.50
1118	Cylinder gasket (2)	.10	1212	Oil control ring	.75
1119	Head cover	.60	1217	Pulley bolt	.40
1120	Filter Felt	.15	1246	Cylinder bolt	.08
1121	Filter screen	.15	1246	Short head bolt	.08
1122	Head	3.00			
1130	Set screw	.15			
1134	Bearing plate bolt (4)	.05			
1135	Suction bumper gasket	.10			
1136	Suction seat	.60			
1137	Suction spring	.15			
1138	Valve (suction or discharge)	.50			
1139	Suction bumper	.60			
1140	Discharge guide	.40			
1141	Discharge spring	.15			
1142	Discharge seat	.45			
1143	Discharge bumper	.50			
1144	Discharge bumper gasket	.10			
1148	Bearing plate gasket	.10			
1150	Fibre washer	.05			

ASSEMBLIES

Bearing plate	3.00
Cylinder head with gasket and filter	5.50
Piston with pin and rings	6.60
Complete set gaskets	.80
Complete set piston rings	2.00

When ordering repairs always give the model number of the compressor, the number of the part, the name of the part and exact quantity wanted.

MINIMUM CHARGE \$1.00

ALL PRICES SUBJECT TO CHANGE WITHOUT NOTICE.

Model 82 Air Compressor

Size 2¹/₄x2 Duplex

The RPM you can run the compressor at various pressures is shown in the following table.

Motor Horse Power	40 LBS. PRESS.		60 LBS. PRESS.		80 LBS. PRESS.		100 LBS. PRESS.		150 LBS. PRESS.	
	RPM	Piston Displ.	RPM	Piston Displ.	RPM	Piston Displ.	RPM	Piston Displ.	RPM	Piston Displ.
1/2	435	4.0	415	3.8	370	3.4	350	3.2	305	2.8
3/4	675	6.2	630	5.8	565	5.2	540	5.0	520	4.8
1	880	8.1	800	7.4	760	7.0	730	6.7	650	6.0

The above figures are for intermittent service and with good full duty motors. For continuous service it is recommended that the RPM be reduced approximately 10% to lighten motor load. The compressor is good for 100 lbs. pressure for continuous service and for 150 lbs. pressure for intermittent service.

PARTS LIST WITH SLEEVE BEARINGS

See Drawing On Opposite Side

Part No.	Name of Part	Price	Part No.	Name of Part	Price
1134	Bearing Plate bolt (4)	.05	1237	Breather assembly and oil level gauge	1.50
1135	Suction bumper gasket (4)	.10	1238	Filter felt	.30
1136	Suction Seat (4)	.60	1239	Filter screen	.30
1137	Suction spring (4)	.15	1240	10" Pulley 1 groove (1/2" belt)	8.00
1138	Suction valve (4)	.50	1241	10" Pulley 1 groove (5/8" belt)	8.00
1139	Suction bumper (4)	.60	1242	Bearing seal	1.60
1199	Crankcase	12.00	1243	Pulley key	.30
1200	Crankshaft	10.00	1244	Head bolt gasket	.10
1201	Bearing plate	3.00	1245	Head bolt	.15
1202	Head	8.00	1246	Bolt (6 for cyl) (4 for head)	.10
1203	Head cover	1.00	1247	Discharge spring	.25
1206	Cylinder	10.00	1250	Connecting rod bolt (4)	.15
1208	Connecting rod (2)	5.00	1259	12" Pulley 1 groove (5/8" belt)	9.50
1209	Piston Pin (2)	1.20	1260	12" Pulley 1 groove (1/2" belt)	9.50
1211	Compression ring (6)	.50			
1212	Oil control ring (2)	.60			
1215	Journal bearing (2)	.80			
1217	Pulley clamp bolt and nut	.25			
1218	Piston (2)	5.00			
1219	Fibre washer (2)	.10			
1220	Discharge valve (2)	.50			
1221	Discharge seat (2)	1.00			
1222	Discharge bumper (2)	1.50			
1223	Discharge screw (2)	.80			
1224	Discharge cap (2)	1.00			
1225	Discharge seat gasket (2)	.10			
1226	Discharge cap gasket (2)	.15			
1227	Connecting rod washer (4)	.05			
1228	Bearing plug	.50			
1229	Oil drain plug	.10			
1230	Cylinder gasket	.20			
1231	Bearing plate gasket	.15			
1232	Head gasket	.30			

ASSEMBLIES

Suction valve assembly with gasket (4)	1.75
Discharge valve assembly with gasket (2)	3.00
Piston, pin and rings (2)	9.50
Connecting rod (2)	5.00
Cylinder head with filter and gasket	20.00
Complete set gaskets	1.50
Complete set rings	4.00

When ordering repairs always give the model number of the compressor, the number of the part, the name of the part and exact quantity wanted

MINIMUM CHARGE \$1.00

ALL PRICES SUBJECT TO CHANGE WITHOUT NOTICE.

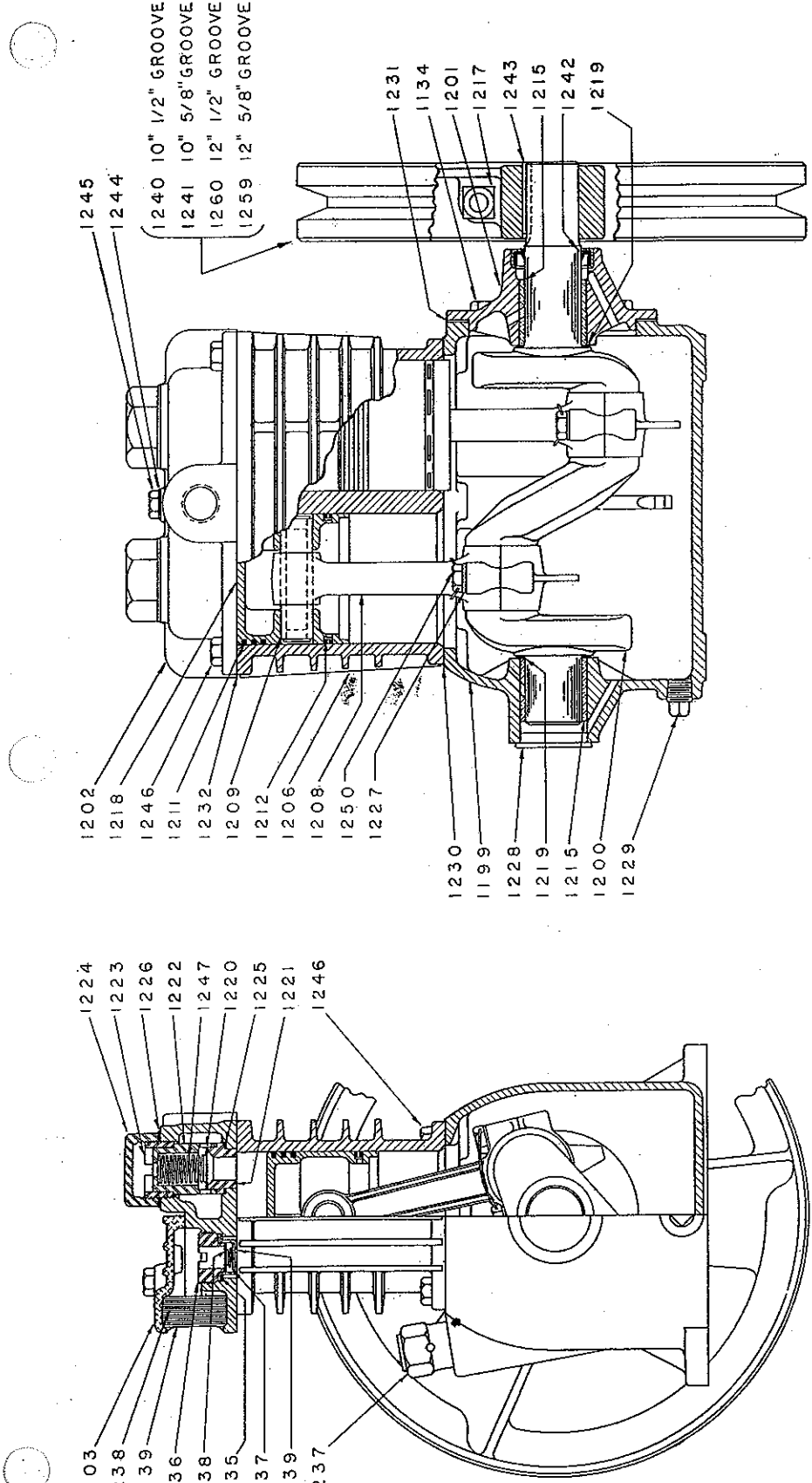
1203
1238
1239
1136
1138
1135
1137
1139
1237

1202
1218
1246
1211
1232
1209
1212
1206
1208
1250
1227

1230
1199
1228
1219
1215
1200
1229

1240 10" 1/2" GROOVE
1241 10" 5/8" GROOVE
1260 12" 1/2" GROOVE
1259 12" 5/8" GROOVE

1231
1134
1201
1217
1243
1215
1242
1219



MODEL 82 AIR COMPRESSOR

SIZE 2 1/4 X 2 DUPLEX

WITH SLEEVE BEARINGS