



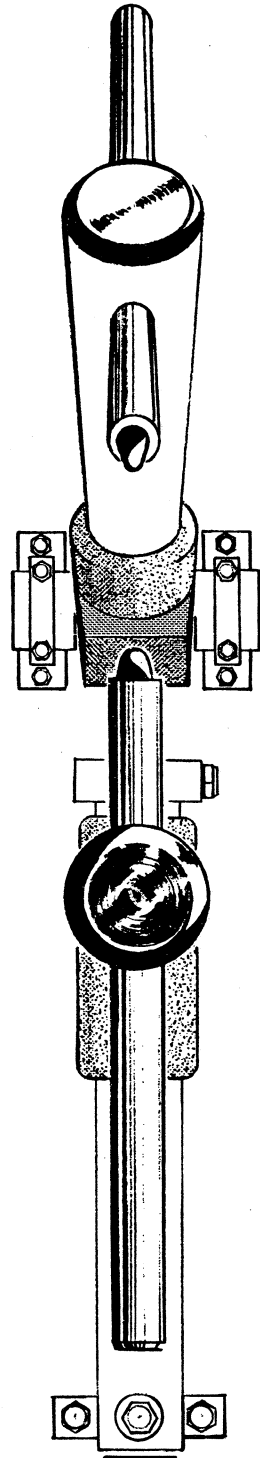
WESTERN ARCTRONICS

SPOT WELDERS

Parts List

165 SERIES-10 15 30 40 50 KVA

Effective above Ser. No. 2000



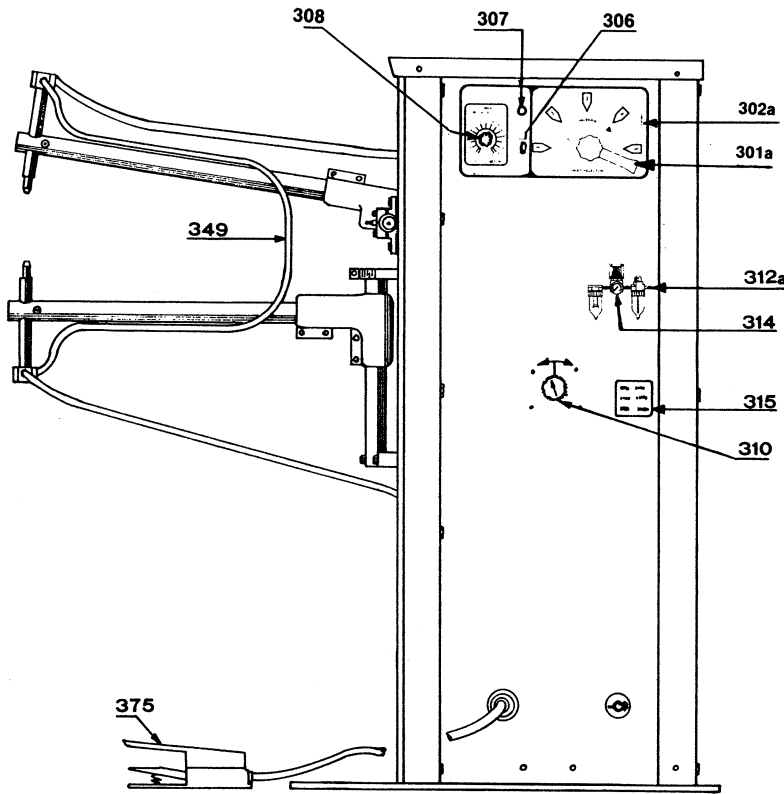


FIG. 1 A

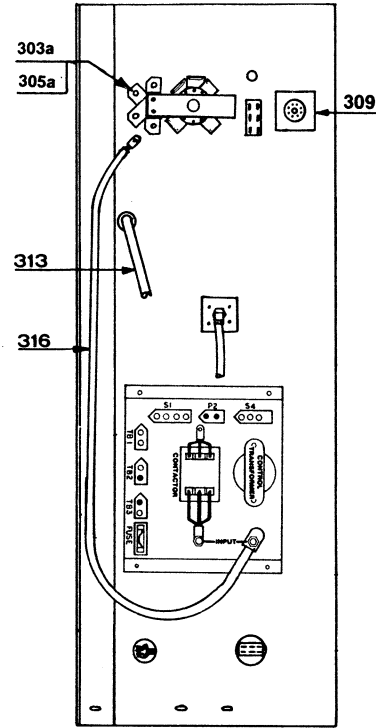


FIG. 2 A

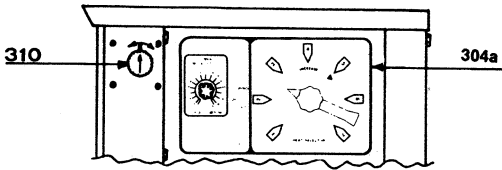


FIG. 1 B

SHOWING LOCATION OF PRESSURE SWITCH ON 30 & 40 KVA MODELS.

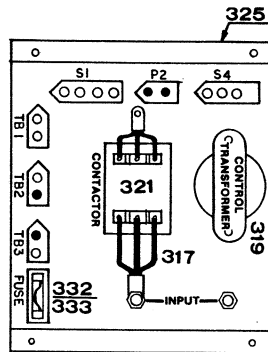


FIG. 2D INSTRUMENT PANEL CT/AO.

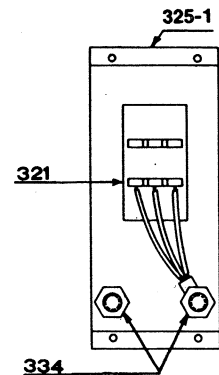
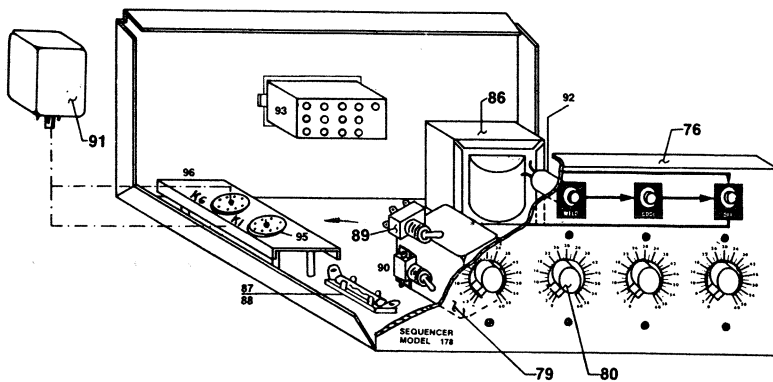


FIG. 2 C

SEQUENCER STYLE "178-A" FOR FA MODELS



ITEM #	PART NO.	DESCRIPTION
75	11085	ASS'Y SEQUENCER
76	11086	CASE FRONT, BOTTOM AND REAR
77	11087	CASE TOP AND SIDES
79	A1345	ELECTRONIC TIMERS ET 76
80	A1345-A	TIMER KNOB
82	A1345-B	TIMER SHELL (FIBRE TUBE)
86		CONTROL TRANSFORMER
87	153-2430	FUSE HOLDER
88	153-2504	FUSE 1.0 AMP
89	151-7308	SWITCH (Operate/Time) DP.D.T.
90	151-7325	SWITCH (Repeat/Non-Repeat) SP. ST.
91	153-6714	RELAY, DP.D.T. (Plug-in Type)
92	151-4502	INDICATOR LAMPS
93	155-1033	TERMINAL BLOCK 4 PIN.
94	10865	TIMER MOUNTING BRACKETS
95	155-1032	SOCKET, 8 Pin Female
96	11078	RELAY, MOUNTING BRACKET

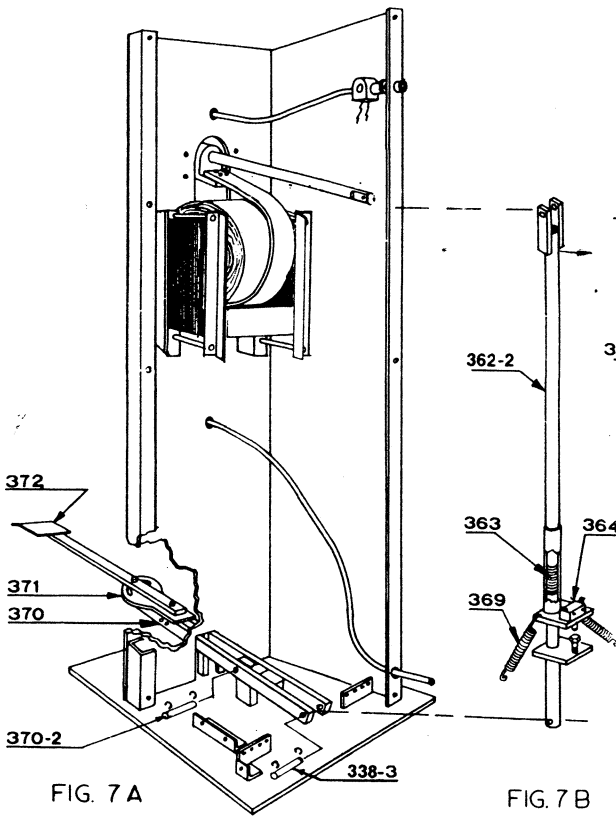


FIG. 7 A

FIG. 7 B

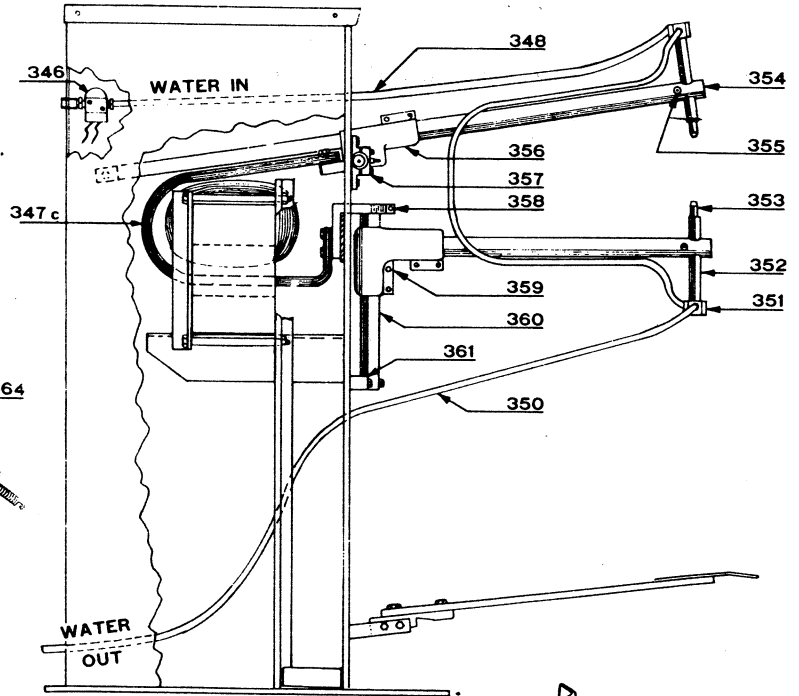


FIG. 4

(A) TWO-STAGE HEATSWITCH *

(B) MICROPROCESSOR CONTROL *

(C) SILICON CONTROL RECTIFIER *

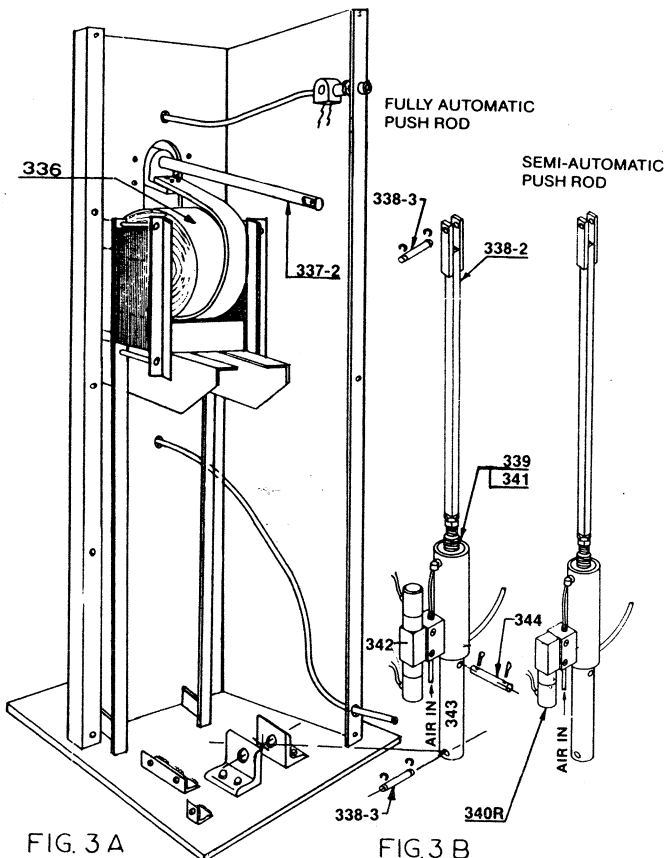
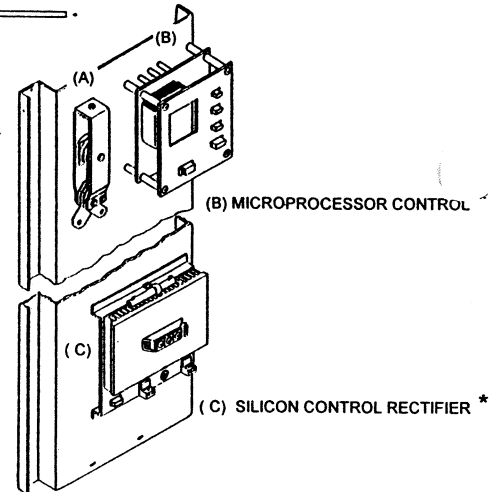
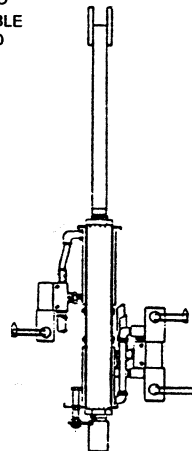


FIG. 3 A

FIG. 3 B

THREADED *
ADJUSTABLE
PUSH ROD

OPTIONAL *
HI-PRODUCTION
AIR SYSTEM



WHEN ORDERING PARTS, ALWAYS STATE MODEL OF UNIT, STYLE OF UNIT, AND SERIAL NUMBER
 I.E. MODEL 15 KVA. CT (FOOT OPERATED) . SERIAL NO.
 MODEL 15 KVA. SA (SEMI AUTOMATIC) . SERIAL NO.
 MODEL 15 KVA. FA (FULLY AUTOMATIC) . SERIAL NO.

REFER TO PARTS PRICE SHEET FOR PROPER PART NUMBERS, DESCRIPTION, AND PRICES
 I.E. ITEM #309, PART NO. A1345 ELECTRONIC TIMER, ET 76

* CONTACT YOUR DISTRIBUTOR FOR INFORMATION

PARTS PICTORIAL
 10 15 30 40 50 KVA SPOT WELDERS
 165 SERIES

PARTS PICTORIAL FOR 40 & 50 KVA SPOTWELDERS
SHOWING UPPER ARM SLIDER VERSION

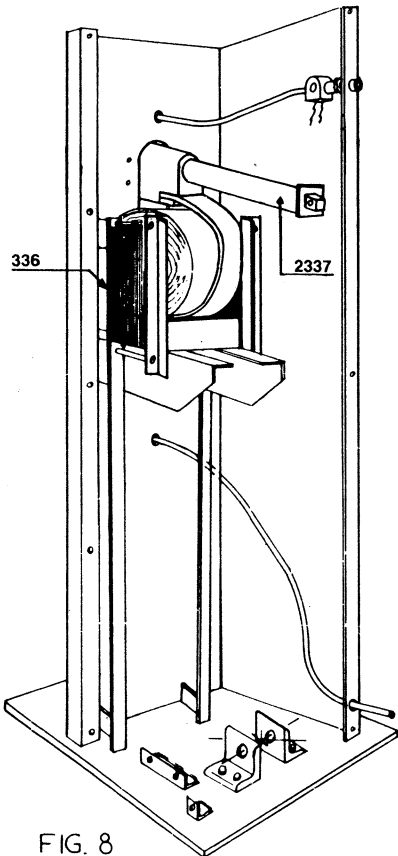


FIG. 8

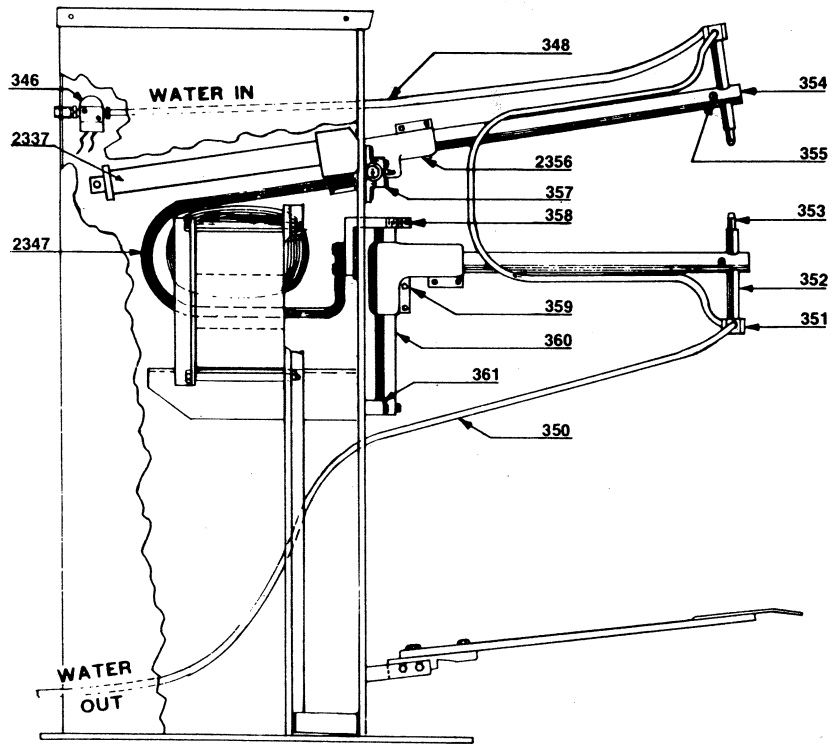


FIG. 9

CONTROL

RECTIFIER *

EL

AL NO.
IAL NO.
IAL NO.

ART

3. ET 76

UTION

CAT. #	ITEM	PART NO.	DESCRIPTION	CT	SA	FA
1039E	2337	34742	TUBE ASSEMBLY	X	X	X
1040E	2347a	34758	SECONDARY STRAPS 40 KVA	X	X	X
1041E	2347b	34858	SECONDARY STRAPS 50 KVA		X	X
1042E	2356	34741	ROCKER ARM CASTING, (SLIDER)	X	X	X



WESTERN ARCTRONICS 1828 LAPORTE AVENUE, FORT COLLINS, COLORADO 80521
PHONE (970) 482-7271